

VIA PANTANO N. 13 - MILANO

STUDIO CASADEI

CORSO VENEZIA N. 45
20121 - MILANO



LOCAZIONE

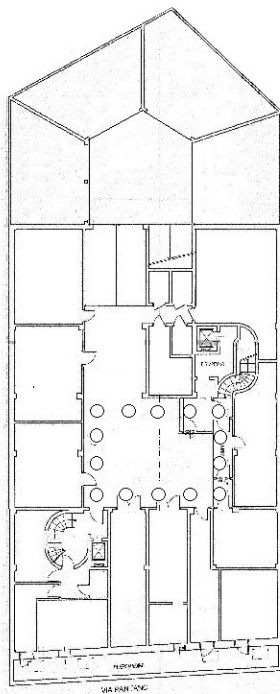
STUDIO CASADEI

CORSO VENEZIA N. 45
20121 - MILANO

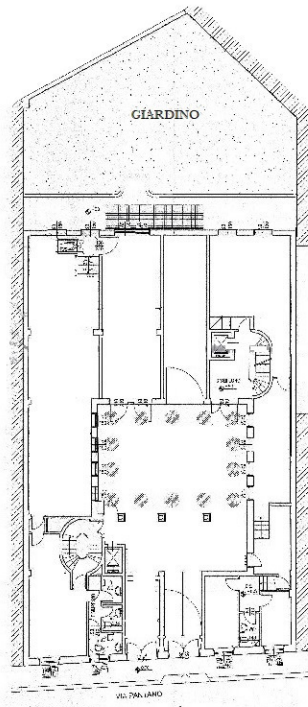
MAPPA



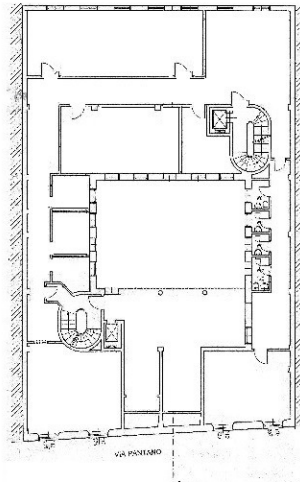
-	piano interrato	mq. 340 x coeff. 0,50 = mq. 170	
-	piano terreno (cortile/portico)	mq. 140 x coeff. 0,20 = mq. 28	
-	piano terreno (giardino)	mq. 200 x coeff. 0,25 = mq. 50	
-	piano rialzato	mq. 367 x coeff. 1,00 = mq. 367	
-	piano 1°, 2°, 3°	mq. 1.657 x coeff. 1,00 = mq. 1.657	
Totale		mq. 2.704	⇒ mq. 2.272 commerciali
S.E. & O.			



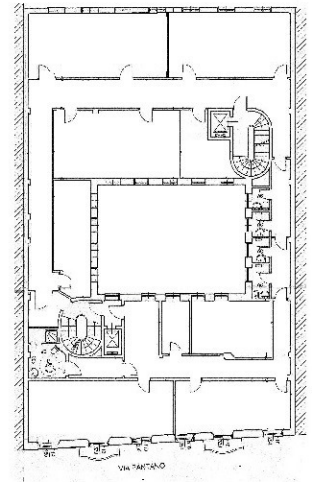
PIANTA PIANO INTERRATO



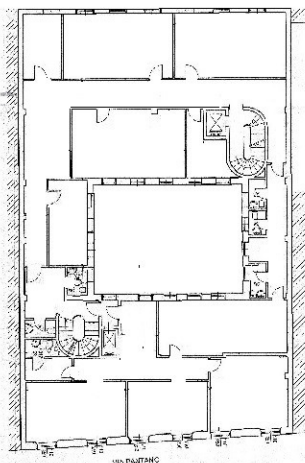
PIANTA PIANO TERRENO



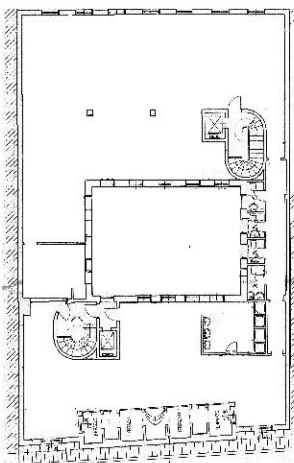
PIANTA PIANO RIALZATO



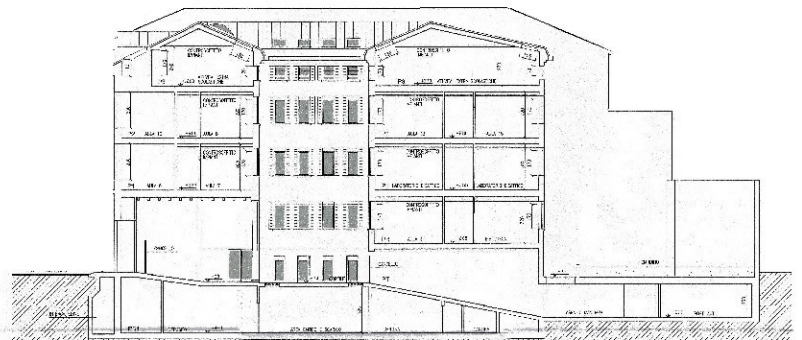
PIANTA PIANO PRIMO



PIANTA PIANO SECONDO



PIANTA PIANO TERZO



SEZIONE

STUDIO CASADEI

CORSO VENEZIA N. 45
20121 - MILANO



STUDIO CASADEI

CORSO VENEZIA N. 45
20121 - MILANO



STUDIO CASADEI

CORSO VENEZIA N. 45 - 20122 MILANO

T. +39 02 55192890

adriano@studiocasadei.com